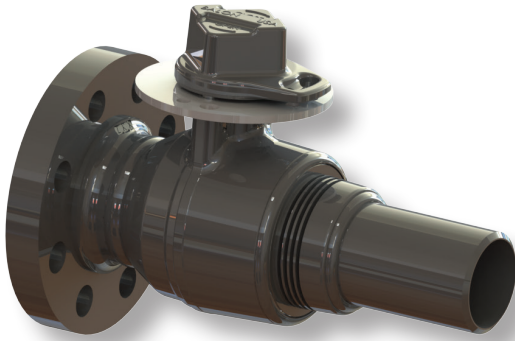
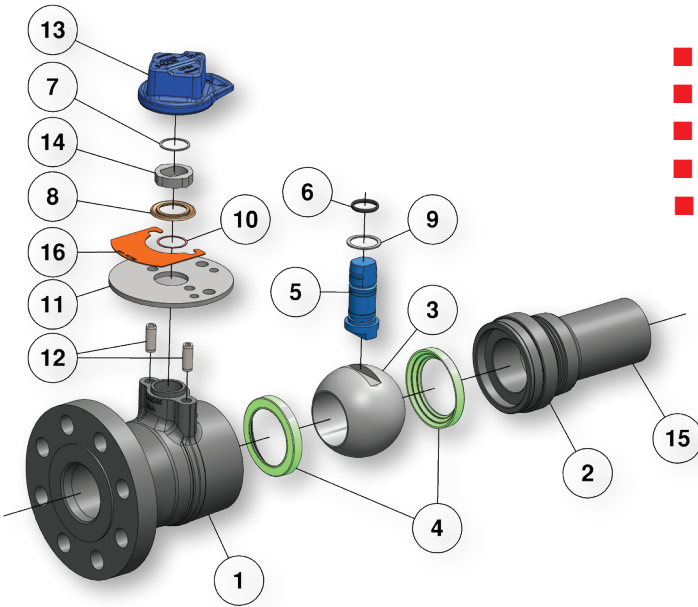


Weld X Flange Connection

Series US Weld X Flange Carbon Steel



- Weld X Flange Ball Valve
- ANSI Class 150 (285 PSI WP)
- ANSI Class 300 (740 PSI WP)
- 2" Through 6"
- Multi-Seal Seats
- True Full Port for Hot Tap Service
- Heat Dissipating Fins for Protection of Seats and Seals During Welding
- Rugged Double Stops
- Heavy Duty Forged Steel Construction
- Solid Balls for Reduction of Turbulence and Pressure Drop
- Stainless Steel Stem Standard
- Maintenance Free
- Meets/Exceeds-ASME B16.34
- 100% Made in USA
- Each Valve Marked With A Unique Identification Number



* Note: Valve is seal welded and is not field repairable.

Material Description

ITEM	PART NAME	MATERIAL (STANDARD)
1	Body	ASTM A105, Normalized
2	Adapter	ASTM A105, Normalized
3	Ball	Carbon Steel - Nickel Chrome Plated
4	Seats	Nylon
5	Stem	316 Stainless Steel
6	Snap O-Ring	Buna-N
7	Snap Ring	Carbon Steel
8	Weather Seal	Nylon
9	Stem Seal	TFE
10	Snap Ring	Carbon Steel
11	Lock Plate	Carbon Steel
12	Stop Pin	Stainless Steel
13	Drive Nut - 2" Square	Ductile Iron/Carbon Steel
14	Stem Connector	Carbon Steel
15	Pipe	ASTM A106 Grade C
16	Tag	Stainless Steel

Dimensional Data

SIZE	CATALOG	PORT/A	WP	B	C	D	E	F	G	LBS.	Cv
2x1.5x2	2R-US13-WF	1.5	285	10.5	3.48	6	2	4.5	6.9	18.5	148
2x1.5x2	2R-US33-WF	1.5	740	10.6	3.48	6.50	2	4.5	6.9	20.1	148
2x2x2	2F-US13-WF	2	285	10.9	4.28	6	2	4.5	7.0	22.5	-
2x2x2	2F-US33-WF	2	740	11	4.28	6.50	2	4.5	7.0	24	-
3x3x3	3F-US13-WF	3	285	11.7	6.05	7.50	2	4.5	7.0	47	-
3x3x3	3F-US33-WF	3	740	11.9	6.05	8.25	2	4.5	7.0	51.2	-
4x3x4	4R-US13-WF	3	285	12.2	6.05	9	2	4.5	7.4	54.2	662
4x3x4	4R-US33-WF	3	740	12.5	6.05	10	2	4.5	7.4	63.5	662
4x4x4	4F-US13-WF	4	285	12.8	7.50	9	2	4.5	7.6	71.5	-
4x4x4	4F-US33-WF	4	740	13.1	7.50	10	2	4.5	7.6	80.7	-
6x6x6	6F-US13-WF*	6	285	16.74	12.4	11	2	5.25	9	138	-
6x6x6	6F-US33-WF*	6	740	16.93	12.4	12.5	2	5.25	9	175	-

*Also available with Gear Operator.

